

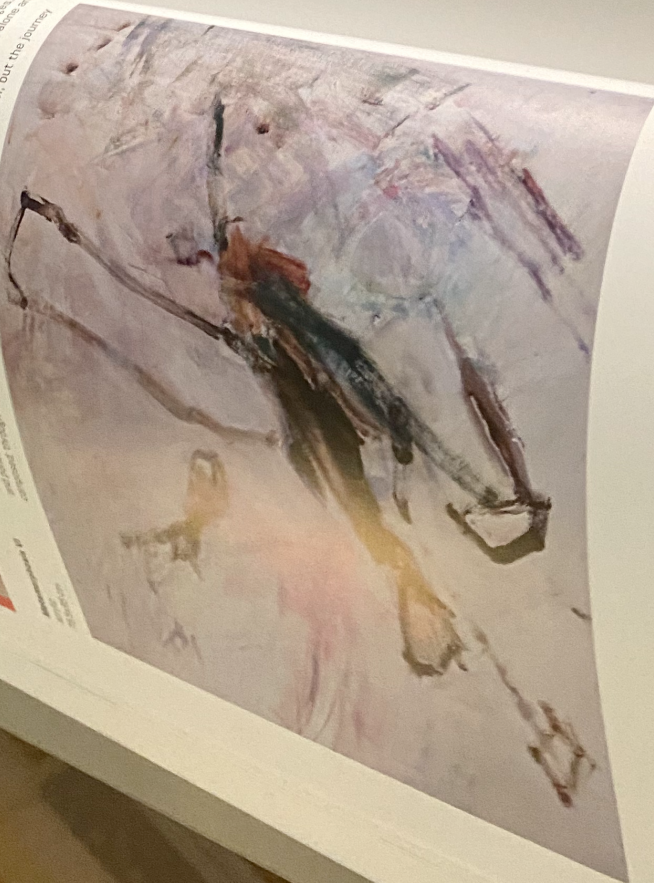
Kari Elisabeth Haug

1911-1992



Metamorphosis

through other more demanding challenges
is demanding to, who we are, along the
in interaction with others. The years made her wiser, but the journey
is demanding to, who we are, along the
in interaction with others. The years made her wiser, but the journey



is ongoing, and she acknowledges that she
and her experience material to, if possible, find answers
to the questions. Art gives her the opportunity to create and
becomes important to have a dialogue about the values and the way each of us see
Kari Elisabeth searches in history for writers, philosophers and composers who have
lived in the same landscape as herself, in order to confirm own assumptions and make
the universal and timeless. This is how her previous work "Lyca's song"
came to be. Her own experiences were

Metamorphosis VII
acrylic
75x75 cm

